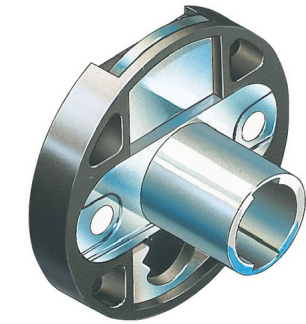


TimberLine C230CB Drawer Lock - TL C230CB



tl_c230cb.png



Rating: Not Rated Yet

Price

Price Each:\$7.34

[Ask a question about this product](#)

Description TimberLine C230CB Drawer Lock has round body. Cam Setback = $\frac{3}{32}$ ", Cam Extension*= $\frac{15}{16}$ ", Cam Throw= $\frac{1}{2}$ " * Measured from center of cylinder to tip of cam in unlocked position Application - Surface mounted lock for locking drawers. Operation - 180° key rotation, CCW to lock, key removable in both locked and unlocked positions. Keying - Order lock plug separately, (see TL C100LP). Packaging - Cylinder is black, toughened nylon. Cylinder is unplated. Cams are zinc plated. TimberLine C230CB Drawer Lock has round body. Cam Setback = $\frac{3}{32}$ ", Cam Extension*= $\frac{15}{16}$ ", Cam Throw= $\frac{1}{2}$ " * Measured from center of cylinder to tip of cam in unlocked position Application - Surface mounted lock for locking drawers. Operation - 180° key rotation, CCW to lock, key removable in both locked and unlocked positions. Keying - Order lock plug separately, (see TL C100LP). Packaging - Cylinder is black, toughened nylon. Cylinder is unplated. Cams are zinc plated.