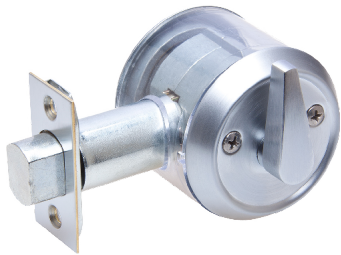


## Ilco Heavy Duty Professional Single Cylinder Deadbolt



il\_4510\_series\_626.png



Rating: Not Rated Yet

**Price**

[Ask a question about this product](#)

### Description

4500 Series — Heavy Duty, Professional Deadbolt

The Ilco Mortise Cylinder Deadbolt is heavy duty and made for professional installation. This lock can be installed on virtually any wood or metal door of any thickness.

- Sold with or without Cylinder
- Available Single Cylinder with ADA Turn Lever, Double Cylinder, Dummy and IC Core Housing
- Single Cylinder model has field reversible handing
- Accepts standard US thread mortise cylinder
- Operates with Lori® fan shaped (Ilco #863R Std Cyl / #R2800R IC Shell) or Adams Rite® Cam (Ilco #863A Std Cyl / #R2800A IC Shell) )
- Cross bore 1 7/8" - 2 1/8" (47.3mm – 54mm)
- Standard 1" (25.4mm) edge bore
- 3 backsets; 2" (50.8mm), 2 3/8" (60.3mm), 2 3/4" (70mm)
- Drive in or screw in bolts