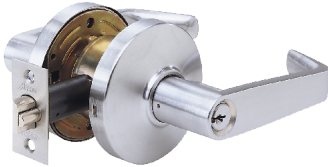


Arrow Lock ML Series Storeroom Sierra Lever Lock Brushed Chrome Finish - 2-3/4in Backset - Keyway: AR1 - ML12SR26D-306-284



ar_ml11_626.png



Rating: Not Rated Yet

Price

Price Each:\$248.86

[Ask a question about this product](#)

Description

Arrow Lock ML Series Storeroom Sierra Lever Lock Brushed Chrome Finish - 2-3/4in Backset - Keyway: AR1 - ML12SR26D-306-284

SKU: ML12SR26D-306-284

Arrow MK Series offer the Security Professional simple solutions to accessibility requirements. Their clean designs, architectural finishes and available functions make them ideal for commercial applications where heavy duty grade one hardware may not be necessary.

Certification

- ANSI/BHMA A156.2, Series 4000, Grade 2
- Federal Specifications FF-H-106C, Series 160

Features

- Function: ML12 F86/161D, 160D. Storeroom, Dead locking latch bolt operated by key in outside lever or operating inside lever. Outside lever is always inoperatable.
- Design: Sierra TA
- Finish: 626 US26D 26D Satin Chromium Plated
- Backset: 2-3/4" (69.85mm) standard.
- Latch: Brass with 1/2" (12.7mm) throw Latch housing is steel, with zinc dichromate finish for corrosion resistance 7/8" (22.225mm) bore in edge of door is required
- Latch Front: Brass, bronze or stainless steel. Standard faceplate for 2-3/4" (60.32mm) backset measures 2-1/4" (57.15mm) x 1-1/8" (28.57mm) with a flat front
- Strike: Brass, bronze or stainless steel. Standard "T" strike measures 2-3/4"(69.85mm) x 1-1/8"(28.57mm). All strikes have a 1-1/4"(31.75mm) lip to center dimension.
- Handing: Reversible
- Door Thickness: 1-3/8" (34.92mm) to 1-3/4" (44.45mm)

- Lock Chassis: Cold rolled steel with zinc dichromate finish for corrosion resistance Requires standard 2-1/8" (53.97mm) bore through door
- Cylinder: Solid brass 6 pin cylinder with Arrow "A" keyway, keyed to 5 pins. Supplied with two 5 pin brass keys