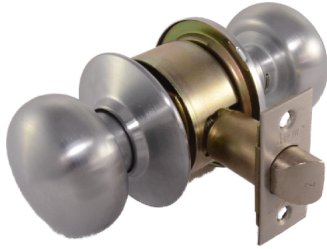


Arrow Lock MK Series Patio Tudor Knob Lock Brushed Chrome Finish - 2-3/8in Backset - Keyway: N/A - MK04TA26D-300-101



ar_mk04ta_out_626.png



Rating: Not Rated Yet

Price

Price Each:\$80.65

[Ask a question about this product](#)

Description

Arrow Lock MK Series Patio Tudor Knob Lock Brushed Chrome Finish - 2-3/8in Backset - Keyway: N/A - MK04TA26D-300-101

SKU: MK04TA26D-300-101

Arrow MK Series offer the Security Professional simple solutions to accessibility requirements. Their clean designs, architectural finishes and available functions make them ideal for commercial applications where heavy duty grade one hardware may not be necessary.

Certification

- ANSI/BHMA A156.2, Series 4000, Grade 2
- Federal Specifications FF-H-106C, Series 160

Features

- Function: MK04 F77/161P, 160P. Patio, Dead locking latch bolt operated by knob from either side. Outside knob is locked by push button inside and unlocked by operating inside knob or closing door. Do not use on doors in rooms that have no other entrance.
- Design: Tudor TA
- Finish: 626 US26D 26D Satin Chromium Plated
- Backset: 2-3/8" (60.32mm) standard.
- Latch: Brass with 1/2" (12.7mm) throw Latch housing is steel, with zinc dichromate finish for corrosion resistance 7/8" (22.225mm) bore in edge of door is required
- Latch Front: Brass, bronze or stainless steel. Standard faceplate for 2-3/8" (60.32mm) backset measures 2-1/4" (57.15mm) x 1" (25.40mm) with a flat front
- Strike: Brass, bronze or stainless steel. Standard "T" strike measures 2-3/4" (69.85mm) x 1-1/8" (28.57mm). All strikes have a

1-1/4"(31.75mm) lip to center dimension.

- Handing: Reversible
- Door Thickness: 1-3/8" (34.92mm) to 1-3/4" (44.45mm)
- Lock Chassis: Cold rolled steel with zinc dichromate finish for corrosion resistance Requires standard 2-1/8" (53.97mm) bore through door
- Cylinder: N/A